



**GREENLEE®**

A Textron Company



COMPLETE LINE OF  
**SIGHT.**

PERFORMANCE ACCOUNTABILITY  
FOR  **GATOR** TOOLS



## DETAILED WORK HISTORY

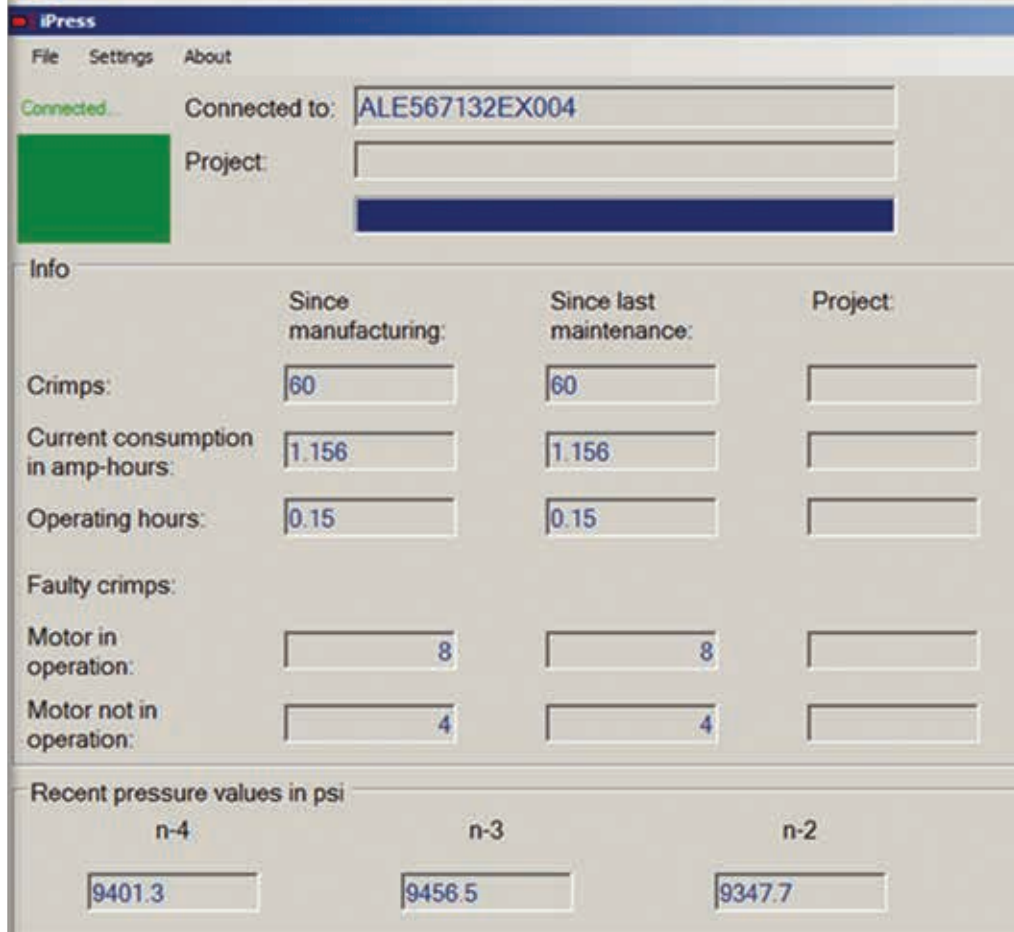
- Download, print, and store work information such as operating pressure, number of crimps/cuts, and battery information.

## ACCOUNTABILITY

- Prove that the job was done correctly with operation and project specific documentation.

## DIAGNOSTICS

- Set and view maintenance intervals and add user identifiable information to manage your inventory.



### GATOR® TOOL PERFORMANCE INTERFACE

- Home navigation screen for waveforms, project start, project log, and operation log
- Three key measurables: number of cycles since manufacture, last maintenance, and project
- Service interval level with grace period setting
- Shows recent pressure values in PSI

## SET UP THE GATOR EYE

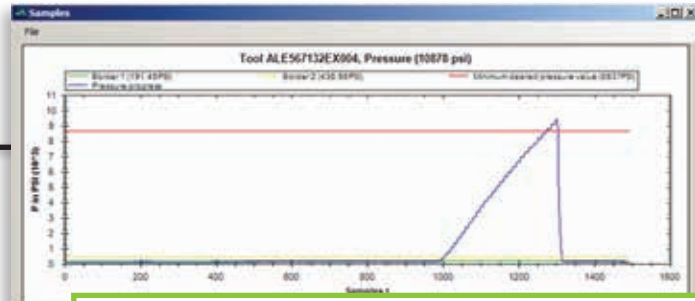
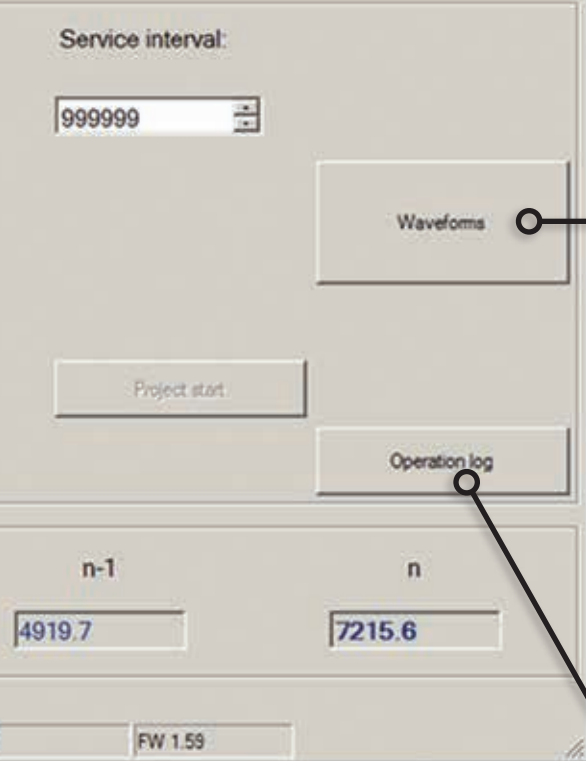
- 1 Download iPress software from [greenlee.com](http://greenlee.com)
- 2 Connect USB to PC; open iPress software
- 3 Place Gator Eye on tool optical interface; pull trigger





# WHAT IS THE GATOR EYE MONITORING?

- Statistical performance of all cycles, integrity of operation and other tool metrics.



## WAVEFORM: REAL TIME ASSURANCE

- View battery information and nominal PSI performance in real time



## Operation log

Company	Date	28. August 2013
Originator	Time	15:53:55
Project		
Serial number	ALE567132EX004	
Number of crimps	60	
Minimum desired pressure value pmin	8637	
Service interval	999999	
Pressure unit	psi	

Total values since manufacturing (manufactured on 15. January 2013)

Number of crimps	Current consumption in amp-hours	Operating hours	Number of low pressure incidents p < pmin		Pressure values p > pmin			
			on manual retraction (motor not in operation)	on automatic retraction (motor in operation)	min.	mean	max.	Standard deviation
60	1.156	0.15	4	8	9292.6	9449.2	10003.2	132

Values since last maintenance (serviced on 15. January 2013)

Number of crimps	Current consumption in amp-hours	Operating hours	Number of low pressure incidents p < pmin		Pressure values p > pmin			
			on manual retraction (motor not in operation)	on automatic retraction (motor in operation)	min.	mean	max.	Standard deviation
60	1.156	0.15	4	8	9292.6	9449.2	10003.2	132

Last low pressure incidents

Counter reading (total)	Peak pressure on manual retraction (motor not in operation)	Counter reading (total)	Peak pressure on automatic retraction (motor in operation)
60	7215.6	59	4919.7
35	4810.9	45	3936.3
20	6668.8	40	5302.6
18	3225.6	36	4700.7
0	0	32	4209

Note:

28. August 2013  
Date

Signature

## OPERATION LOG

- Printable performance overview
- Differentiate your workforce with accountability




**Gator Eye™ WORKS WITH  
ALL GATOR TOOLS**  
(YEP, EVEN THE ONES FROM 1994.)\*



GATOR TOOLS FEATURE **THE MOST ADVANCED CRIMPING AND CUTTING TECHNOLOGY** that makes the job easier, reduces risk of injury, and minimizes worker downtime.

## ORDERING INFORMATION

CAT. NO.	UPC NO.	DESCRIPTION	CAT. NO.	UPC NO.	DESCRIPTION
GATOR-EKG	19254	Gator Eye Programming Device	EK1550FTLU11	00788	15-Ton Flip-Top Battery Powered Crimping Tool with 120V Charger (Utility)
EHP700L11	00735	Battery Powered Pump with 120V Charger (Electrical)	EK1550L11	52150	15-Ton Battery Powered Crimping Tool with 120V Charger (Electrical)
EHP700LU11	00754	Battery Powered Pump with 120V Charger (Utility)	EK210L11	52079	1.5 Ton Battery Powered Crimping Tool with 120V Charger
EK06ATL11	52053	Quad-Point Battery Powered Crimping Tool with 120V Charger	EK410L11	52089	4-Ton Battery Powered Crimping Tool with 120V Charger
EK06FTL11	52063	Quad-Point Battery Powered Crimping Tool, Flip-Top Head Dieless with 120V Charger	EK425LD11	52031	Crimping Tool with CJD3 Jaws with 120V Charger
EK1230L11	52068	12-Ton Battery Powered Crimping Tool with 120V Charger	EK425LDBG11	52025	Crimping Tool with CJD3BG Jaws with 120V Charger
EK1240CL11	52043	12-Ton Battery Powered Crimping Tool, 1.65 opening, PVC Covered, with 120V Charger	EK425LD011	52028	Crimping Tool with CJD30 Jaws with 120V Charger
EK1240KL11	12566	12-Ton Battery Powered Crimping Tool, Kearney Head, with 120V Charger	EK425LK11	52034	Crimping Tool with CJK Jaws with 120V Charger
EK1240L11	10227	12-Ton Battery Powered Crimping Tool, 1.65 opening, with 120V Charger	EK622L11	52984	6-Ton Battery Powered Crimping Tool with 120V Charger
EK12IDL11	52048	Battery Powered Dieless Crimping Tool with 115V Battery Charger	EK628L11	52102	6-Ton Battery Powered Crimping Tool with 120V Charger

\* Previous generation Gator® Tools may not have all capabilities.



To request a demo, see your local distributor or visit  
[www.greenlee.com/resources/mobilemarketing](http://www.greenlee.com/resources/mobilemarketing).

